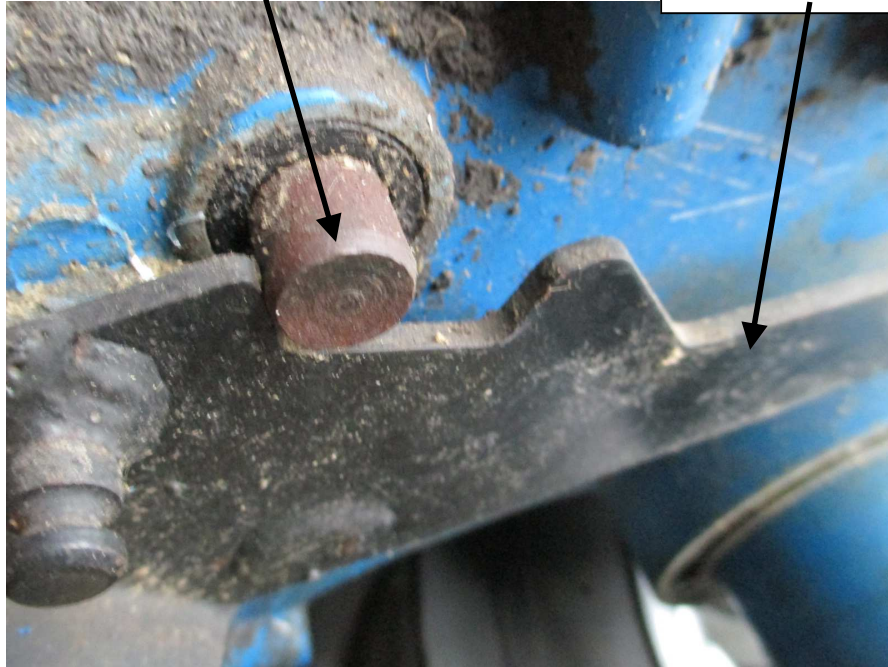


STEEL "LIMITER" PIN ON
SIDE OF TRANSMISSION

REVERSER LEVER ON
SIDE OF TRANSMISSION



THE ABOVE PICTURE SHOWS THE REVERSER LEVER IN THE "FORWARD" POSITION FOR TILLING (OR "REVERSE" POSITION FOR MOWING). IN THIS POSITION, THE **SPRING** IS PULLING THE LEVER AGAINST ONE SIDE OF THE LIMITER PIN.

STEEL "LIMITER" PIN ON
SIDE OF TRANSMISSION

REVERSER LEVER ON
SIDE OF TRANSMISSION



THIS PICTURE SHOWS THE REVERSER LEVER IN THE "REVERSE" POSITION FOR TILLING (OR "FORWARD" POSITION FOR MOWING). IN THIS POSITION, THE **CABLE** IS PULLING THE LEVER AGAINST THE OPPOSITE SIDE OF THE LIMITER PIN. THE **CABLE TENSION** MUST BE ADJUSTED SO THAT WHEN THE RED REVERSING LEVER ON THE HANDLEBARS IS PULLED ALL THE WAY BACK, THE REVERSER LEVER ON THE TRANSMISSION IS PULLED ALL THE WAY AGAINST THE LIMITER, AS IN THE PICTURE!!!